

Panasonic

Specifications

TYPE	Type	Digital Single Lens Mirrorless camera		
	Recording Media	SD memory card, SDHC memory card, SDXC memory card (Compatible with UHS-I standard SDHC/SDXC memory cards)		
	Image Sensor Size	17.3 x 13.0 mm (in 4:3 aspect ratio)		
IMAGE SENSOR	Lens Mount	Micro Four Thirds mount		
	Type	Live MOS Sensor		
	Total Pixels	16.84 Megapixels		
	Camera Effective Pixels	16.00 Megapixels		
	Color Filter	Primary color filter		
RECORDING SYSTEM	Dust Reduction System	Supersonic wave filter		
	Recording File Format	Still Image	JPEG [DCF, Exif 2.3], RAW, MPO [When attaching 3D lens in Micro Four Thirds standard]	
		Motion Image	AVCHD [Audio format: Dolby Digital 2ch] / MP4 [Audio format AAC 2ch]	
	Aspect Ratio	4:3, 3:2, 16:9, 1:1		
	Image Quality	RAW, RAW+Fine, RAW+Standard, Fine, Standard, MPO+Fine, MPO+Standard [When attaching 3D lens in Micro Four Thirds System standard]		
	Color Space	sRGB, Adobe RGB		
	File Size [Pixels]	Still Image	NTSC Area	[Full HD] 1,920 x 1,080, 30fps [sensor output is 30p, 20Mbps] [HD] 1,280 x 720, 30fps [sensor output is 30p, 10Mbps] [VGA] 640 x 480, 30fps [sensor output is 30p, 4Mbps]
			PAL Area	[Full HD] 1,920 x 1,080, 25fps [sensor output is 25p, 20Mbps] [HD] 1,280 x 720, 25fps [sensor output is 25p, 10Mbps] [VGA] 640 x 480, 25fps [sensor output is 25p, 4Mbps]
		Motion Image*	NTSC Area	[Full HD] 1,920 x 1,080, 60i [sensor output is 60p, 17Mbps] [Full HD] 1,920 x 1,080, 60i [sensor output is 30p, 24Mbps] [Full HD] 1,920 x 1,080, 24p [sensor output is 24p, 24Mbps] [HD] 1,280 x 720, 60p [sensor output is 60p, 17Mbps]
			PAL Area	[Full HD] 1,920 x 1,080, 50i [sensor output is 50p, 17Mbps] [Full HD] 1,920 x 1,080, 50i [sensor output is 25p, 24Mbps] [Full HD] 1,920 x 1,080, 24p [sensor output is 24p, 24Mbps] [HD] 1,280 x 720, 50p [sensor output is 50p, 17Mbps]
		Continuous Recordable Time* [Motion Image, AVCHD, Approx.]	80 min with H-FS12032, H-H020A	
		Actual Recordable Time* [Motion Image, AVCHD, Approx.]	40 min with H-FS12032, H-H020A	
		Flicker Reduction	1/50 [1/60] [1/100] [1/120] / OFF	
		Wi-Fi FUNCTION	Wi-Fi	IEEE 802.11b/g/n, 2412 MHz - 2442 MHz [11ch], Wi-Fi / WPA / WPA2, Infrastructure mode
			Type	Contrast AF system
FOCUS		Focus Mode	AFS [Single] / AFF [Flexible] / AFC [Continuous] / MF	
	AF Mode	Face detection / AF Tracking / 23-area-focusing / 1-area-focusing / Pinpoint		
	AF Detectable Range	EV -4 - 18 [ISO 100 equivalent]		
	AF Assist Lamp	YES		
	AF Lock	Set the Fn button in custom menu to AF lock		
EXPOSURE CONTROL	Light Metering System	1.728-zone multi-pattern sensing system		
	Light Metering Mode	Multiple / Center Weighted / Spot		
	Metering Range	EV 0 - 18 [F2.0 lens, ISO 100 equivalent]		
	Exposure Mode	Program AE / Aperture Priority AE / Shutter Priority AE / Manual		
	ISO Sensitivity [Standard Output Sensitivity]	Auto / Intelligent ISO / 125 [Extended] / 200 / 400 / 800 / 1600 / 3200 / 6400 / 12800 / 25600 [Changeable to 1/3 EV step]		
	Exposure Compensation	1/3 EV Step ±5 EV		
	AE Lock	Set the Fn button in custom menu to AE lock		
WHITE BALANCE	AE Bracket	3.5/7 frame, in 1/3 or 2/3 or 1EV Step, Max ±3 EV		
	White Balance	Auto / Daylight / Cloudy / Shade / Incandescent / Flash / White Set 1, 2 / Color temperature setting		
	White Balance Adjustment	Blue/amber bias, Magenta/green bias		
SHUTTER	Type	Electronically-control focal-plane shutter / Electronic shutter		
	Shutter Speed	60 - 1/16,000		
SCENE GUIDE	Sell Timer	3 images after 10 sec / 2 sec / 10 sec		
	Still Image	Clear Portrait / Silky Skin / Backlit Softness / Relaxing Tone / Sweet Child's Face / Distinct Scenery / Bright Blue Sky / Romantic Sunset Glow / Vivid Sunset Glow / Glistening Water / Clear Nightscape / Cool Night Sky / Warm Glowing Nightscape / Artistic Nightscape / Glittering Illuminations / Handheld Night Shot / Clear Night Portrait / Soft Image of a Flower / Appealing Food / Cute Dessert / Freeze Animal Motion / Clear Sports Shot / Monochrome		
		Motion Image	Clear Portrait / Silky Skin / Backlit Softness / Relaxing Tone / Sweet Child's Face / Distinct Scenery / Bright Blue Sky / Romantic Sunset Glow / Vivid Sunset Glow / Clear Nightscape / Cool Night Sky / Warm Glowing Nightscape / Artistic Nightscape / Handheld Night Shot / Clear Night Portrait / Appealing Food / Cute Dessert / Freeze Animal Motion / Clear Sports Shot / Monochrome	
	BURST SHOOTING	Burst Speed	Mechanical shutter: H: 5.0 frames/sec [with AFS], 4.0 frames/sec [with AFC, In 1-area-focusing AF model], M: 4.0 frames/sec [with Live View], L: 2.0 frames/sec [with Live View] Electronic shutter: SH: 40.0 frames/sec, H: 10.0 frames/sec, M: 4.0 frames/sec [with Live View], L: 2.0 frames/sec [with Live View]	
		Number of Recordable Images	7 images [when there are RAW files with the particular speed] Unlimited consecutive shooting [when there are no RAW files] [depending on aspect ratio, memory card size, picture size, and the setting for the quality]	

BUILT-IN-FLASH	Type	TTL Built-in-Flash, GN5.6 equivalent [ISO200 - m], GN4.0 equivalent [ISO100 - m], Built-in Pop-up
	Flash Mode	Auto*, Auto / Red-eye Reduction*, Forced On, Forced On / Red-eye Reduction, Slow Sync., Slow Sync. / Red-eye Reduction, Forced Off * For iA, iA only
	Synchronization Speed	Less than 1/50 second
MONITOR	Flash Synchronization	1st Curtain Sync., 2nd Curtain Sync.
	Type	TFT LCD with touch monitor
	Monitor Size	3.0 inch [7.5 cm] / 3:2 Aspect / Wide-viewing angle
	Pixels [Approx.]	1,036K dots
	Field of View [Approx.]	100%
LIVE VIEW	Monitor Adjustment	Brightness, Contrast and Saturation, Red tint, Blue tint
	Digital Zoom	2x, 4x
	Extra Tele Conversion	Still Image Motion Image
Other Functions	Guide Lines [9 patterns], Real-time Histogram	
LEVEL GAUGE	Yes	
DIRECTION DETECTION FUNCTION	Yes	
FUNCTION BUTTON	Fn1, Fn2, Fn3, Fn4, Fn5, Fn6	Wi-Fi / AF/AE LOCK / AF-ON / One Push AE / Touch AE / Preview / Level Gauge / Zoom Control / Photo Style / Aspect Ratio / Picture Size / Quality / Sensitivity / Metering Mode / i. Dynamic / i. Resolution / HDR / Shutter Type / Flash Mode / Flash Adjust / Ex. Tele Conv. / Digital Zoom / Stabilizer / Motion Pic. Set / Picture Mode / Silent Mode / AFS/AFF / Peaking / Histogram / Guide Line / Rec Area / Step Zoom / Zoom Speed / Restore to Default
	Still image	Expressive / Retro / Old Days / High Key / Low Key / Sepia / Monochrome / Dynamic Monochrome / Rough Monochrome / Silky Monochrome / Impressive Art / High Dynamic / Cross Process / Toy Effect / Toy Pop / Bleach Bypass / Miniature Effect / Soft Focus / Fantasy / Star Filter / One Point Color / Sunshine
CREATIVE CONTROL	Motion Image	Expressive / Retro / Old Days / High Key / Low Key / Sepia / Monochrome / Dynamic Monochrome / Impressive Art / High Dynamic / Cross Process / Toy Effect / Toy Pop / Bleach Bypass / Miniature Effect / Fantasy / One Point Color
	Exposure Mode	Program AE / Aperture-Priority / Shutter-Priority / Manual Exposure
CREATIVE VIDEO MODE	Exposure Mode	Program AE / Aperture-Priority / Shutter-Priority / Manual Exposure
PHOTO STYLE	Still Image and Motion Image	Standard / Vivid / Natural / Monochrome / Scenery / Portrait / Custom
PLAYBACK	Playback Mode	Normal playback, 30-thumbnail display, 12-thumbnail display, Calendar display, Zoomed playback [Max. 16x], Slideshow [duration & effect is selectable], Playback Mode [Normal / Picture / Video / 3D Play / Category / Favorite], Location Logging, Clear Retouch, Title Edit, Text Stamp, Video Divide, Time Lapse Video, Stop Motion Video, Resize, Cropping, Rotate, Favorite, Print Set, Protect, Face Recognition Edit, Highlight Display
	Image Protection / Erase	Protection Single / Multi, Cancel Erase Single / Multi / All / Except Favorite
PRINT	Direct Print	PictBridge compatible
INTERFACE	USB	USB 2.0 High Speed Multi
	HDMI	microHDMI TypeD Video: Auto / 1080i / 720p / 480p [576p in PAL system] Audio: Stereo
	Audio Video Output	Monaural Type, NTSC / PAL, NTSC only for North America *Check the website of the Panasonic sales company in your country or region for details on the products that are available in your market.
	Microphone	Stereo
LANGUAGE	Speaker	Monaural
	OSD Language	English, German, French, Italian, Spanish, Polish, Czech, Hungarian, Russian, Chinese [Traditional], Chinese [Simplified], Dutch, Thai, Korean, Turkish, Portuguese, Arabic, Persian, Japanese, Swedish, Danish, Finnish, Greek, Vietnamese *Check the website of Panasonic sales company in your country / region or ask customer support for details of the OSD language available on the products sold in your country / region.
POWER	Battery	Li-ion Battery Pack [7.2V, 680mAh, 4.9Wh] [Included], Battery Charger
	Battery Life [Approx.] * CIPA Standard**	220 images with H-H020A 230 images with H-FS12032
DIMENSIONS / WEIGHT	Dimensions [W x H x D] [CIPA Standard]	98.5 x 56.9 x 30.4 mm / 3.88 x 2.16 x 1.20 inch [excluding protrusions]
	Weight [Approx.]	Approx. 204 g / 0.45 lb [SD card, Battery, Body] Approx. 173 g / 0.38 lb [Body only] Approx. 214 g / 0.48 lb [SD card, Battery, H-FS12032 lens included] Approx. 291 g / 0.64 lb [SD card, Battery, H-H020A lens included] Approx. 361 g / 0.80 lb [SD card, Battery, H-FS12032 + H-H020A lenses included]
OPERATING ENVIRONMENT	Operating Temperature	0°C to 40°C [32°F to 104°F]
	Operating Humidity	10% RH to 80% RH
STANDARD ACCESSORIES	Software	PHOTOfunSTUDIO 9.2 AE [Windows XP / Vista / 7 / 8] SILKYPIX® Developer Studio 4.1 SE [Windows XP / Vista / 7 / 8, Mac OS X v10.5 / v10.6 / v10.7 / v10.8] LoLoScope [trial version] [Windows XP / Vista / 7 / 8]
	Standard Accessories	Battery pack, Battery Charger, USB Connection Cable, Shoulder Strap, CD-ROM, AC Cable, External Hand Grip *External Hand Grip is not included for DMC-GM1K kit. Lens Cap, Lens Rear Cap *Lens Rear Cap is not included for DMC-GM1K kit.

* These are standard times taken at a temperature of 23°C [73.4°F] and a humidity of 50%RH. The time available for recording varies depending on the environment, the interval between recordings, and the manner of use. Actual recordable time is the time available for recording when repeating actions such as switching the power supply [ON/OFF], starting/stopping recording, zoom operation etc. Maximum time to record motion pictures continuously with [AVCHD] is 29 minutes 59 seconds in Europe and some Asian areas. Maximum time to record motion pictures continuously with [MP4] is 29 minutes 59 seconds or up to 4 GB. You can check the recordable time on the monitor. [For [FHD] in [MP4] format, the file size is large and so the recordable time will drop below 29 minutes 59 seconds.]

** Shooting conditions: 23°C with 50%RH humidity; Monitor on; using a Panasonic SDHC Memory Card; Using the supplied battery; Using the supplied lens; Starting recording 30 seconds after the camera is turned on [When the optical image stabilizer is set to [Normal]]; Recording once every 30 seconds with full flash every second recording; Turn the camera off every 10 recordings; The number of recordable pictures varies depending on the recording interval time. If the recording interval time becomes longer, the number of recordable pictures decreases. CIPA is an abbreviation of "Camera & Imaging Products Association".

• Use a card with SD Speed Class*** with "Class 4" or higher when recording motion images.
 *** SD speed class is the speed standard regarding continuous writing.
 • SDHC Memory Cards and SDXC Memory Cards can be used only in equipment that is compatible with their respective formats.
 • If the computer being used does not support SDXC Memory Cards, a message prompting you to format may appear. [Doing so will cause recorded images to be erased so do not choose to format.] If the card is not recognized, please refer to the below support site.
<http://panasonic.net/avc/sdcard/information/SDXC.html>

• Weight and dimensions shown are approximate. • Design, functions, and specifications are subject to change without notice. • Some sample images are simulated. • Some accessories are not available in some countries. • The use of recorded or printed materials that are protected by copyright for any purpose other than personal enjoyment is prohibited, as it would infringe upon the rights of the copyright holder. • All other company and product names are trademarks of their respective corporations.

• iMovie, Mac, and the Mac logo are trademarks of Apple Inc., registered in the U.S. and other countries. The Works with iMovie logo is a trademark of Apple Inc.

• The Wi-Fi CERTIFIED Logo is a certification mark of the Wi-Fi Alliance.

• "AVCHD Progressive", "AVCHD", the "AVCHD Progressive" Logo and the "AVCHD" Logo are trademarks of Panasonic Corporation and Sony Corporation.

• Manufactured under license from Dolby Laboratories. Dolby and the double-D symbol are trademarks of Dolby Laboratories.

Panasonic released the world's first DSLM in 2008*, and continues to push the technological boundaries of digital photography with LUMIX G.

*The DMC-G1, the world's first Digital Single Lens Mirrorless camera, was introduced on September 12, 2008.

LUMIX G

The Art of LUMIX



LUMIX GM



LIGHTS IN THE CITY

SATOKI NAGATA

THE FEELINGS OF PEOPLE AND THEIR LIVES IN THE CITY SHOWN THROUGH PHOTOGRAPHIC MEDIA. THROUGH MANIPULATIONS OF LIGHT AND SHADOW WITH OFF CAMERA FLASH, SUBTLE YET SUBSTANTIAL MOMENTS WERE CAPTURED. THE SURREAL ABSTRACTION OF IMAGES ALLOWS FOR AN INTERACTION OF MULTIDIRECTIONAL STORY LINES AND AN OVERLAPPING OF DIALOGUES BETWEEN PHOTOGRAPHER, SUBJECT AND VIEWER.



Le Moment Présent

A PHOTOGRAPHER IS AN EXPRESSIONIST WHO CATCHES MOMENTS THAT OCCUR IN LIFE AND UNITES THEM WITH A UNIQUE IMAGE. SOMETIMES I ADD A GLASS REFLECTION EFFECT BETWEEN THE LIGHT AND THE IMAGE, AND OTHER TIMES I PROVIDE A TIMELESS SPATIAL SENSATION (ATMOSPHERE/EMOTION) FROM AMONG THE BACKLIGHTING TO INTERSECT WITH THE INSTANT THAT THE SHUTTER IS PRESSED. HERE, IT STRONGLY APPEARS BETWEEN AN EVERYDAY PARIS SCENE AND THE IMAGE WITH A "BE-HERE-NOW" EFFECT.

CLEMENT JOLIN





TOKYO VIVID

SAKAE TAKAHASHI

TOKYO HAS LONG FASCINATED THE WORLD. LOCATED IN A DEVELOPED COUNTRY, IT FORGES ITS OWN UNIQUE PATH OF EVOLUTION, UNLIKE ANY OTHER CITY ANYWHERE. THIS IS A PEEK AT A PHOTOGRAPHER'S VIEW OF "NOW" IN THE WORLD'S LARGEST CITY. SUBMERGED IN CITY STREETS, PEOPLE FROZEN IN A FRACTION OF A SECOND APPEAR TO BE WORKS OF ART, OR CHARACTERS IN CELLOID PHOTOS. OVERFLOWING IN VIVID COLORS, THE IMAGES MIGHT WELL PORTRAY THE CITY'S UNIQUE SUBCULTURE AS IT IS BORN AND FADES AWAY EACH DAY. INDEED, A NEAR FUTURE THAT NOBODY COULD HAVE IMAGINED EXISTS HERE AND NOW.



Actual size

Magnesium Alloy Frame

Small body. Infinite creativity.

Moments of beauty and surprise in our everyday lives can disappear in the blink of an eye. With high-end camera quality and performance always by your side, you'll be ready. This mindset evolved into a device of a miraculous size. Equipped with the Micro Four Thirds 16.00-megapixel Live MOS Sensor and the high performance Venus Engine complete with a built-in flash all within in its svelte magnesium alloy body, this camera has sacrificed nothing. While encapsulating the impressive capacities, the leatherette on the grip and the knurled aluminum dial show that attention has been paid to the finest details, even to the design - the minute you touch it, its creative potential will thrive.

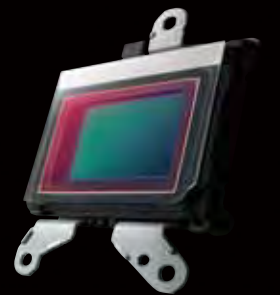


Incredible picture quality stimulates your creativity.



Sharp textural expression with the 16.00-megapixel Live MOS Sensor [Ultimate Image Quality]

The DMC-GM1 features the same 16.00-megapixel Live MOS Sensor that gives the high-end GX7 its outstanding resolution and high sensitivity. The photodiode in each pixel is enlarged and the redesigned on-chip lens enhances light condensation to achieve higher sensitivity. What's more, noise generation is minimized in both the pixel circuit and digital signal readout circuit to provide a better S/N ratio. The same Venus Engine is also used for image processing. The combination of the Live MOS Sensor and the Venus Engine achieves more detailed reproduction, making it possible to capture clear images even in low-light situations and allows max sensitivity of ISO 25600.



Showing you vivid, lifelike scenes [In Cell Touch LCD]

The large, 3.0-inch, approximately 1036K-dot high resolution static-type touch monitor has a field of view that is nearly 100%. The front panel is directly attached to the new In Cell Touch LCD. This dramatically suppresses external light reflection. Even outdoors, the clear, crisp view makes sure you won't miss those great shooting opportunities and gives you the freedom to frame them just the way you want.





Giving you the power to shoot instantly.

Fast and accurate [Contrast AF]

Compared with the Phase Difference auto focus (AF) system, the Contrast AF system boasts higher accuracy especially for shooting with a fast lens and low F value. The DMC-GM1 also features high-speed Light Speed AF, making it possible to capture even fast-moving subjects clearly. The camera and the lens exchange the digital signal at a maximum 240 frames per second (fps) to minimize focusing time.

Focusing clearly, even under starlit conditions [Low Light AF]

Low Light AF makes it possible to focus on your subject more precisely in situations such as moonlight, even without an AF assist lamp. It further enhances the shooting performance for low-light situations all the way down to -4EV, which is equivalent to a starry sky with no other light source.

Natural, intuitive focusing [Touch AF]

Simply touch the part you want to auto focus on.

Precise manual focusing [Focus Peaking]

Sometimes you need an extremely fine focus. For those times, only a manual focus will do. The Peaking function shows you the optimal focus at a glance for both photos and videos, and gives you the kind of natural depth that you're looking for.

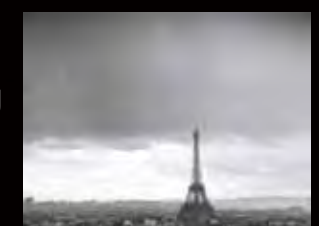




Responding more completely to your shooting intent.

Various effects as you shoot [Creative Control]

The popular Creative Control mode has been upgraded by increasing the filter options to 22, and featuring the new Rough Monochrome,* Silky Monochrome* and Monochrome. * For photo only.



Digital Single Lens Mirrorless camera expression in videos [Full-HD Recording]

The DMC-GM1 also features high-quality Full-HD video recording in AVCHD and MP4* with stereo sound. * 30 fps (NTSC area) / 25 fps (PAL area) in MP4 recording.

Turn off the shutter sound and flash while shooting [Silent Mode]

In addition to turning off the shutter sound, you can cancel the beeping key sounds, flash, and AF assist lamp. This is convenient for shooting in quiet places where operating sounds and lights would be inappropriate, such as museums.

Wi-Fi enables remote control and one-touch sharing [Wi-Fi]

With the "Panasonic Image App," you can use a smartphone or tablet as a controller to zoom,* focus and shoot remotely. You can also instantly upload and share your images on an SNS (Social Networking Service). The Instant Transfer function allows the camera to transfer the photo data to designated electronic devices automatically whenever shutter is released.



* With the H-PS14042 or H-PS45175 LUMIX G Power Zoom Lens.



A new spec called camera affinity is born.

Newly developed, lightweight, and high-performance [Compact Lens]

A retractable structure is used to achieve this compact lens. When retracted, the lens has a depth of only 24 mm. Made of aluminum, it weighs only about 70 g. When mounted, the entire weight of the camera and lens is only about 273.5 g. The focal length at the wide setting is 24mm (35mm camera equivalent). It is ideal for shooting wide-angle shots or scenes with considerable depth.

Careful attention to even the smallest details [Knurled Aluminum Dial]

The knurled aluminum dial adds nicely to the highly elegant appearance. It also has a comfortable feeling, and ensures stable operation.

Fits firmly and securely in the hand [Comfortable Grip]

Artificial leather is used on the camera exterior. This gives you an excellent grip while adding an impressive and refined accent to the entire camera.



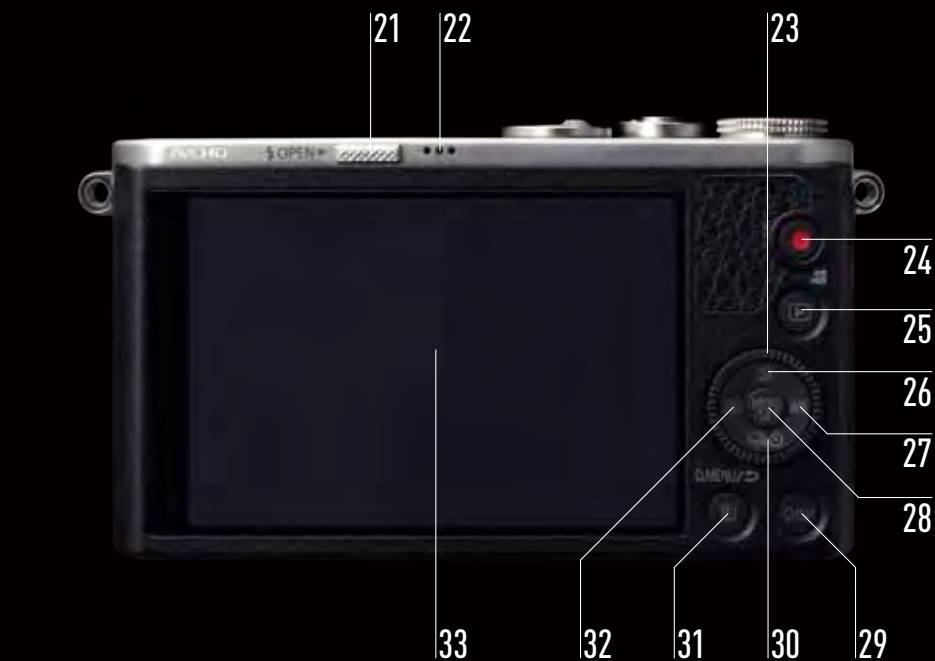


MAIN PARTS AND CONTROLS

01: Self-timer indicator/AF assist lamp, 02: Sensor, 03: Lens lock pin, 04: Lens release button, 05: Mount, 06: Tripod mount, 07: Lens fitting mark, 08: DC coupler cover, 09: SD card/Battery door, 10: AV OUT/DIGITAL socket, 11: HDMI socket



12: Stereo microphone, 13: Camera ON/OFF switch, 14: Mode dial, 15: Shoulder strap eyelet, 16: Shutter button, 17: Status indicator/Wi-Fi® connection lamp, 18: Focus mode lever, 19: FUNCTION 1 button, 20: Flash

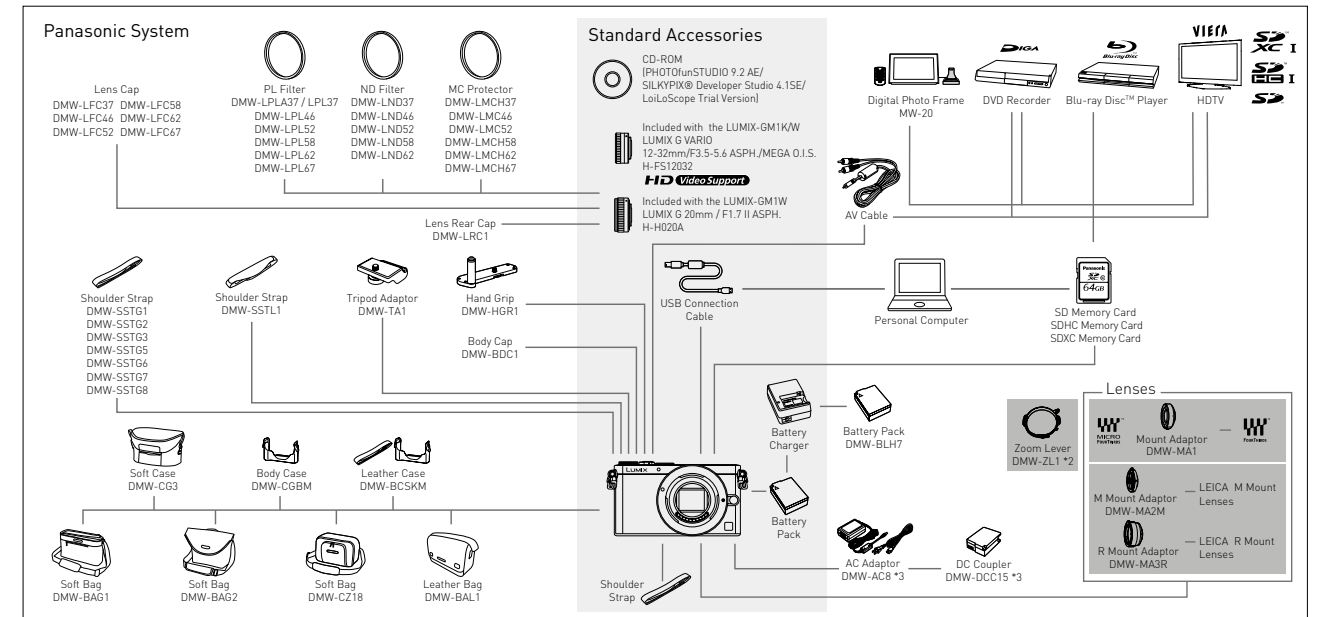


21: Flash open lever, 22: Speaker, 23: Control dial, 24: Motion picture button, 25: Playback button, 26: Exposure compensation button, 27: WB button, 28: MENU/SET button, 29: DISPLAY button, 30: DRIVE MODE button, 31: Delete/Q.MENU/Cancel button, 32: AF MODE button, 33: 3.0-inch wide-viewing angle, touch-screen monitor

Optional Accessories

Filter / Protector PL Filter DMW-LPLA37 / LPL37 DMW-LPL46 DMW-LPL52 DMW-LPL58 DMW-LPL62 DMW-LPL67 	ND Filter DMW-LND37 DMW-LND46 DMW-LND52 DMW-LND58 DMW-LND62 	MC Protector DMW-LMCH37 DMW-LMC46 DMW-LMC52 DMW-LMCH58 DMW-LMCH62 DMW-LMCH67 	Mount Adaptor DMW-MA1 for the Four Thirds system 	DMW-MA2M for M mount lens of Leica Camera AG 	DMW-MA3R for R mount lens of Leica Camera AG 
Hand Grip DMW-HGR1 	Tripod Adaptor DMW-TA1 	Zoom Lever DMW-ZL1 	Battery Pack DMW-BLH7 	Shoulder Strap (Leather) DMW-SSTL1 	
Body Case DMW-CGBM 	Leather Case DMW-BCSKM 	Soft Bag DMW-CZ18 	SD / SDHC / SDXC Memory Card 64GB: RP-SDU64G 32GB: RP-SDU32G 16GB: RP-SDU16G 8GB: RP-SDU08G 4GB: RP-SDU04G  *1GB = 1 billion bytes. Usable capacity will be less. 		

System Chart



*1 The firmware update is recommended for more comfortable HD video recording <http://panasonic.jp/support/global/cs/dsc/> [English] *2 The DMW-ZL1 is compatible with the following Micro Four Thirds lenses (As of August 2013). H-F007014 / H-HS12035 / H-FS014042 / H-FS014045 / H-FS14140 / H-VS014140 / H-HS35100 / H-FS45150 / H-FS045200 / H-FS100300. *3 The AC Adaptor DMW-AC8 requires the DC coupler DMW-DCC8 / DCC11 / DCC12 / DCC15. The DC coupler DMW-DCC8 / DCC11 / DCC12 / DCC15 require the AC Adaptor DMW-AC8. *Some functions of LUMIX-GH3 / G6 / GX7 / GM1 / GF6 cannot be used when mounting the Four Thirds lenses with the Mount Adaptor DMW-MA1, the LEICA M or R lenses with the Mount Adaptor DMW-MA2M or DMW-MA3R. *Leica is a registered trademark of Leica Microsystems IR GmbH. *When a lens that does not support the Contrast AF function is mounted, operation will automatically switch to manual focus. *Confirm the operation information of compatible lenses at Customer Support <http://panasonic.jp/support/global/cs/dsc/> [English]. *For detailed information about the lenses made by SIGMA, OLYMPUS, LEICA, COSINA and KENKO TOKINA, please see each company's website. *Batteries made by other companies which have been certified by Panasonic may be used with these units, but we offer no guarantee as to the quality, performance or safety of such batteries. *Exercise care when purchasing batteries. Many fake or imitation batteries have been found among those sold at unusually low prices and those which customers cannot check for themselves before purchasing. *Please confirm the latest information about batteries on the following website. <http://panasonic.jp/support/global/cs/info/battery.html> [English]. *The SDXC/SDHC Memory Card can be used only if their logos are indicated on the equipment or in the operation manual. It cannot be used with equipment that supports only the SD Memory Card.

Included Software Makes Your Photos and Videos More Expressive

PHOTOfunSTUDIO 9.2 AE

This software makes it possible to sort and organize photos and videos not only of those newly taken but also of those stored in your computer with quick start-up and fast read-in of images. You can upload photos to Facebook™ and videos to YouTube™ or Facebook™ via this software, too.



- YouTube is a registered trademark or trademark of Google Inc.
- Facebook is a registered trademark or trademark of Facebook, Inc.

SILKYPIX® Developer Studio 4.1 SE

The DMC-GM1 records original image data in RAW file format. A number of highly advanced functions can be applied to these RAW images by using this software, with its unique combination of high resolution and extraordinary color separation performance.



LoiLoScope (Trial Version)

You can easily edit, convert and manage videos that you took in AVCHD format. And there are many effects to choose from. This helps to create the kind of videos you want and greatly adds to the fun after shooting.